

Xtreme Products Inc.
Honda Big Red
Kit No. XTH690
2in. Kit

Read these instructions carefully. Xtreme recommends, a professional mechanic perform the installation. Care should be taken to follow all standard safety procedures.

A thorough inspection of the suspension should be made prior to performing the installation. Any worn, bent or broken parts should be replaced. After installation another inspection should be made, checking for loose components or missing hardware. Inspect, again after eight hours of operation.

To begin, check to make sure all components and necessary tools are on hand.

Components:

Two hardware bags and (4) brackets for the front. 1 hardware bag and 2 brackets per side

Two hardware bags and (4) brackets for the rear. 1 hardware bag and 2 brackets per side

Disassembly / Installation Procedure

1.) Begin by loosening the lug nuts on both front tires. Raise the unit, using a suitable lifting device or procedure, until the front tires are off the ground. If using a floor jack with stands, chock the rear wheels to prevent the unit from rolling. If using jack stands, make sure the stands are placed under the frame and not the body. Make sure the unit is **stable and secure**.

2.) Remove the tires / wheels.

NOTE: *Now is a good time to check the threads on the lug studs. Check for rust, pulled threads or other deterioration that could cause a stud/thread failure.*

READ THIS PRIOR TO BEGINNING INSTALLATION

3.) On the passenger side, remove both bolts holding the shock in place, remove and place to the side. Save the factory hardware from the lower mount. Using a 10x55mm bolt, going from rear to front, insert it through factory channel, the Xtreme bracket, supplied spacer, factory channel, and the other Xtreme bracket. Do not tighten this bolt; just start the nut on the bolt. In the center of the brackets, there is a hole in each of the brackets, there is also a spacer and 10x55mm bolt provided. Insert the spacer between the brackets and install the bolt and nut. Do not tighten at this time.

4.) Move the bracket back against the frames and install the supplied u-bolts, attaching the brackets to the frame tubes. Place the shock into the new mounting position, then tighten all hardware.

Diagrams #1, #2, and #3 reflect the above instructions.



5.) Repeat the above procedures on the opposite side.

Rear

6.) Begin raising the unit, using a suitable lifting device or procedure, until the rear of the bike is off the ground. If using a floor jack with stands, chock the front wheels to prevent the unit from rolling. If using jack stands, make sure the stands are placed under the frame and not the body. Make sure it is **stable and secure**.

7.) Remove the upper shock bolt and loosen the lower shock bolt to allow the shock to pivot. Place the 05 bracket along the outside front of the frame, aligning the inner hole with the factory shock mounting location. Place the 06 bracket on the inside of the factory channel, aligning the inner hole with the factory shock mounting location. At the factory shock mounting hole, install the 12mm bolt thru the 05 bracket, placing the sleeve inside the channel, and thru the 06 bracket and frame. Install nut, but do not tighten at this time.

8.) Move the shock back into position, aligning with the new shock mounting holes in the Xtreme brackets. Attach shock to the brackets using the supplied bolt and nut, do not tighten at this time.

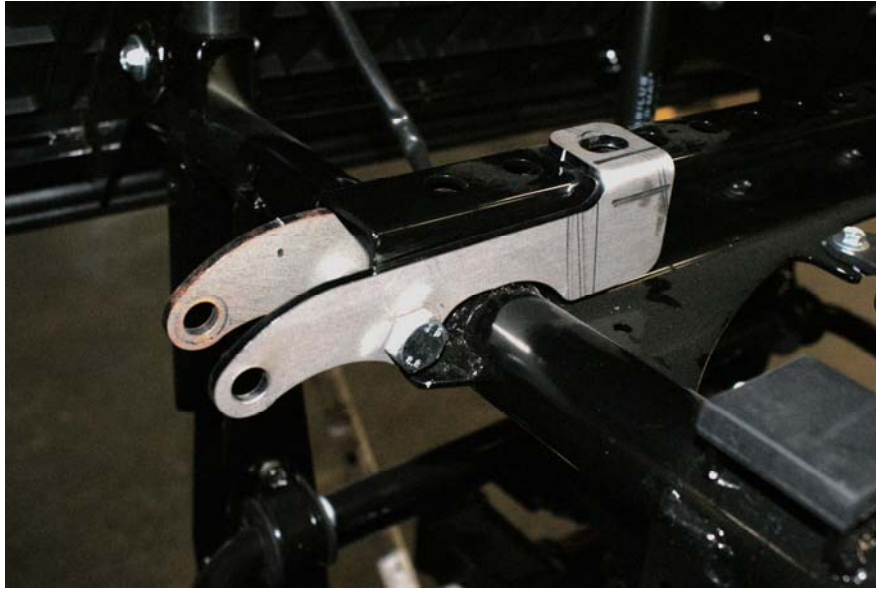
9.) Place a flat washer on the supplied 10mm bolt. Place this bolt downwards thru the Xtreme bracket on the top of the factory channel, and down thru the channel and the other Xtreme bracket. Install flat washer and nut on the bolt and tighten at this time. Now you can tighten all the other bolt/nuts.

10.) Repeat the above procedures on the driver's side. **NOTE: On the driver's side, the 05 bracket goes on the outside rear of the factory channel, reversed from the way it goes on the passenger side. And the 06 bracket will go on the inside of the channel to the front.**

Diagrams below reflect the above instructions



View from Passenger side



View from Passenger side



11. A good “Anti-Seize” compound should be applied to the lug studs and the tire/wheel combination of choice installed. Remove all jacks, jack stands and other devices used to lift and hold the bike. Check all brackets and bolts to be sure everything is tight.

